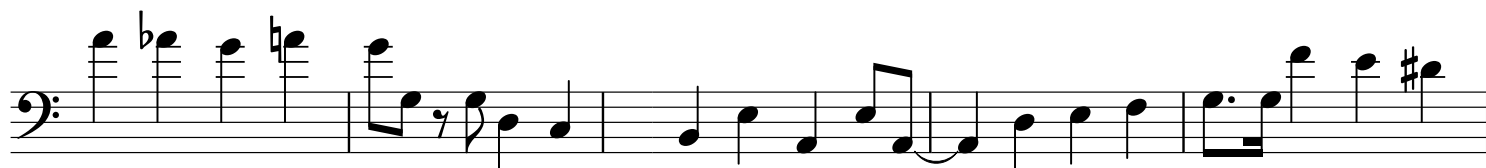
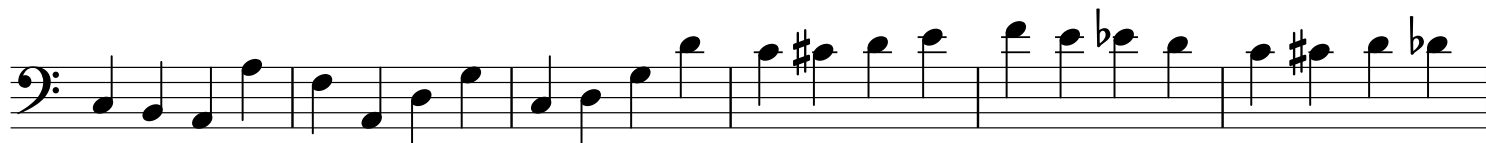
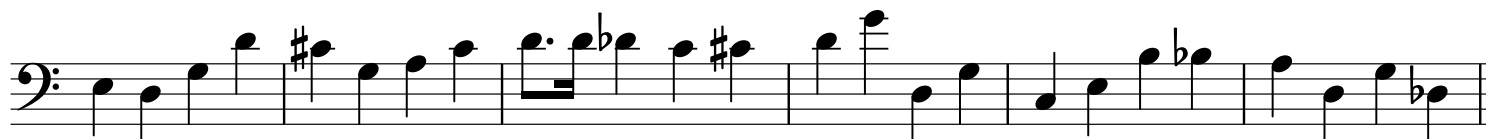
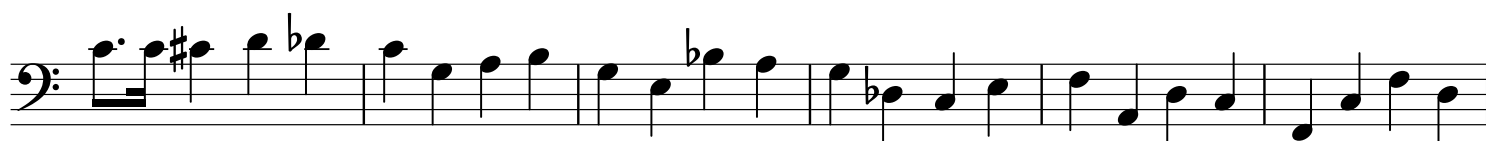
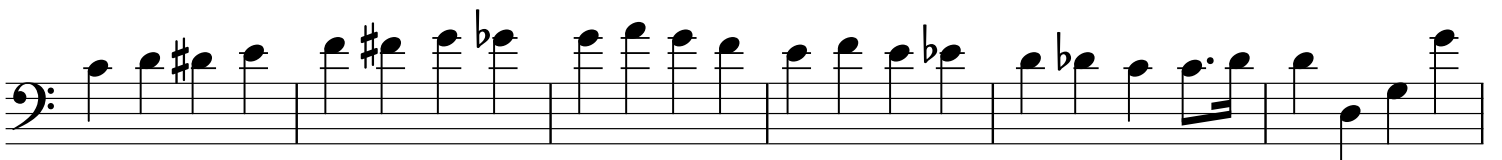
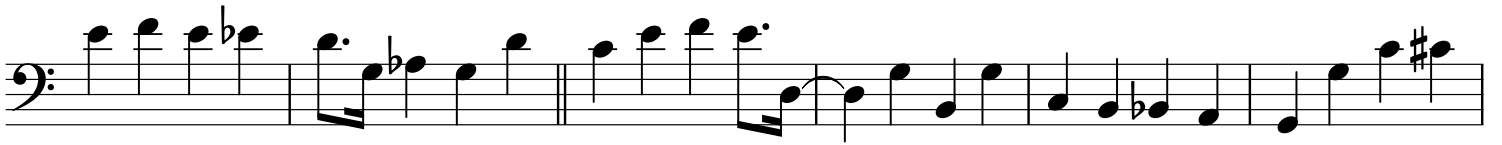


C Jam Blues

Groovy

Paul Chambers





First staff of music in bass clef. It begins with a double bar line. The melody consists of quarter notes and eighth notes. Accents include a flat (b) and a sharp (#).

Second staff of music in bass clef. It begins with a double bar line. The melody consists of quarter notes and eighth notes. Accents include a flat (b) and a sharp (#).

Third staff of music in bass clef. It begins with a double bar line. The melody consists of quarter notes and eighth notes. Accents include a flat (b) and a sharp (#).

Fourth staff of music in bass clef. It begins with a double bar line. The melody consists of quarter notes and eighth notes. Accents include a flat (b) and a sharp (#).

Fifth staff of music in bass clef. It begins with a double bar line. The melody consists of quarter notes and eighth notes. A triplet of eighth notes is marked with a '3' below it. Accents include a flat (b) and a sharp (#).

Sixth staff of music in bass clef. It begins with a double bar line. The melody consists of quarter notes and eighth notes. Accents include a flat (b).

Seventh staff of music in bass clef. It begins with a double bar line. The melody consists of quarter notes and eighth notes. Accents include a flat (b) and a sharp (#).

Eighth staff of music in bass clef. It begins with a double bar line. The melody consists of quarter notes and eighth notes. Accents include a flat (b) and a sharp (#).

